

## Norton Rail Trail : FAQ

### **Q: How will the wildlife in the area surrounding the path be affected?**

Generally wildlife and people use the path at different times of the day and shouldn't interact much. I wouldn't expect too much of a difference. Wildlife use is something we will review closely during the permitting phase and find ways to keep people and wildlife safe. (From Conservation Agent J. Carlino)

### **Q: Who will be responsible for maintaining the trail and removing trees/snow?**

Mansfield would continue to clear cut the area to provide access to the sewer line on an annual basis. Norton DPW would be responsible for minimal routine maintenance. We also anticipate organizing a group of volunteers to actively help as needed.

### **Q: Won't trash be an issue along the trail?**

As part of the planning process, we will be thinking carefully about the placement of trash receptacles along the trail. We also plan to organize a group of volunteers to ensure that the trail stays litter free. However, after speaking with residents of Mansfield, we have discovered that they have had to cancel their annual clean up days due to the lack of litter on the trail.

### **Q: Where will the trail start and end?**

The trail would span from the Taunton line to the existing trail in Mansfield.

### **Q: Will there be any on road sections?**

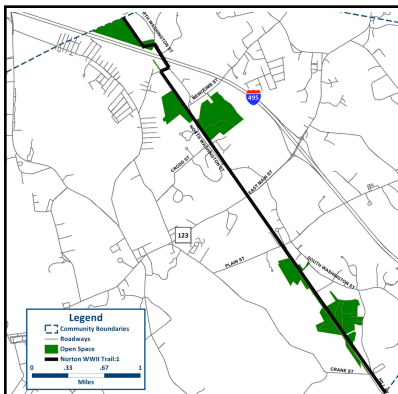
The trail would need to be on road to cross 495. We anticipate it would exit the Old Colony rail line at Cobb Street, cross the bridge over 495, and return to the rail line as soon as it is feasible.

### **Q: What are the plans for intersections with North Washington Street and Rt 123?**

The highest priority of the committee is safety at these intersections as well as safety on the trail. We have been working closely with members of SRPEDD (Southeast Regional Planning and Economic Development District) who have been involved with many rail trail projects. They are sharing design elements of other trails as well as giving us ideas for how we can ensure that our trail in Norton is safe. Our committee strongly believes that if the proposed path is planned properly, safety issues can be effectively mitigated.

### **Q: Would there be any police patrol done on the trail?**

The police would add the rail trail route to their existing bike patrol.



### **Q: How will sharing the trail with horses work?**

Equestrians will be using a trail that is separated from the multi-use trail.

### **Q: Where will people park? What will prevent them from parking in our neighborhood?**

During the design phase, we plan to include dedicated parking at various points to help prevent people from parking in residential neighborhoods. Signs may also be placed in neighborhoods where there is concern.

### **Q: How can I get involved?**

Send us an email at [railtrailnorton@gmail.com](mailto:railtrailnorton@gmail.com) & keep up-to-date at: <http://nortonrailtrail.weebly.com> We'd love to hear from you!